



MUNICIPAL BUILDING  
1300 BRIGHTON ROAD  
BEAVER, PENNSYLVANIA 15009-9211  
(724) 774-4800  
[www.brightontwp.org](http://www.brightontwp.org)

**Newsletter**  
*Winter 2013/14*

## **Township Looks Forward to 2014**

As another year is closed, it can be reported that many projects have been initiated or completed, many of which have been reported in the quarterly newsletters. To do these projects in an effective and cost efficient manner takes the efforts of many dedicated employees and volunteers, people who care about our community. We will not take the time to mention all the boards, commissions, committees and volunteers here, but the results of their collective efforts make Brighton Township a great community to live in.

The Township has adopted a budget for 2014 with a real estate tax level of 11.0 mills, an increase of 1 mill. This is a significantly lower millage rate than other communities in the Beaver Area, and much of Beaver County in general. Less than eleven cents of each real estate tax dollar is paid to the Township. In addition, Brighton Township does not levy business privilege or mercantile taxes. The \$3.46 million operating fund budget will retain, without reduction, existing services and programs that are currently in place to serve the residents of the Township. It has been the effort of the Township to keep the tax rate at a minimum. With sound financial responsibility on the part of the Board and Township employees, the Township has been able to do so.

The most significant change to the 2014 Budget is increased spending for public safety. The budget moves the Township away from dependence upon part-time scheduling in the Police Department by moving two officers to full-time status. Additional hours have also been added for flexible scheduling for peak hour patrols to special duty initiatives. The Board continues to do project planning and scheduling and provides an annual allocation of funds earmarked for special purposes. The Board has increased these allocations where need is anticipated and works closely with our Volunteer Fire Department as part of this programming. The Township maintains a 10-year replacement schedule of projected capital vehicle and equipment replacements and sets funds aside for this program as part of budget programming to plan for their orderly replacement. The Township maintains in excess of 43.35 miles of Township roads and it is necessary to fund an adequate road maintenance and paving program annually. The Township also continues to invest in the upgrade of parks and recreation areas, and the expansion of open space areas, implementing recommendations of previous studies and planning documents.

As stated earlier, it is only by the combined efforts of many dedicated employees and volunteers who take pride in our community that make Brighton Township a great community to live in. We are also appreciative of the community support the Township enjoys. We welcome your participation and input on areas of concern to you and assure you that the Board and staff will remain diligent in our efforts to keep Brighton Township the best location in Beaver County.

Brighton Township Board of Supervisors  
John Curtaccio  
James E. Equels, Sr.  
Mark Piccirilli

### **SUPERVISORS**

JOHN CURTACCIO  
*Chairman*

JAMES E. EQUELS, SR.  
*Vice Chairman*

MARK PICCIRILLI  
*Supervisor*

BRYAN K. DEHART  
*Manager*

HAROLD F. REED, JR.  
*Solicitor*

DANIEL C. BAKER  
ASSOCIATES, INC.  
*Township Engineer*

### **BRIGHTON TOWNSHIP MUNICIPAL AUTHORITY**

(724) 774-4800

MICHAEL L. KEELIHER  
*Chairman*

KERIEN FITZPATRICK  
*Vice Chairman*

JACK E. ERATH  
*Secretary*

GORDON R. SHEFFER, PhD  
*Treasurer*

JEFFREY S. MAZE  
*Assistant Secretary/Treasurer*

### **BRIGHTON TOWNSHIP SEWAGE AUTHORITY**

(724) 774-4800

GORDON R. SHEFFER, PhD  
*Chairman*

JEFFREY S. MAZE  
*Vice Chairman*

JACK E. ERATH  
*Secretary*

KERIEN FITZPATRICK  
*Treasurer*

MARK PICCIRILLI  
*Assistant Secretary/Treasurer*

**Police Chief Howard Blinn is shown with Donald Sanders and Joshua Curtaccio who were recently promoted by the Board of Supervisors from part-time to full-time status, effective January 6, 2014. Officer Sanders has been with the Department since 2007 and Officer Curtaccio has been with the Department since 2006.**



## THE CHANCE ENCOUNTER

Long ago and far away Brighton Township resident Ray Custard was one of the many young soldiers serving his country and saving his country. The long ago was 1944 and the far away was war torn Europe. Like many other Americans in his age group, he had to abruptly discontinue his future personal plans. As part of the aptly named "Greatest Generation," Ray and his peers were thrust into mass mobilization brought about by World War II. A natural youthful optimistic view of the future was now facing the war time reality of mortality. During his overseas military involvement, Ray had a chance encounter. Although this accidental encounter was a brief and fleeting moment in a life span, it remained in Ray's memory a lifetime. Indeed, quite a chance encounter of a lifetime.

Although our focus is centered on a brief event during combat, a wider perspective enhances our narrative and understanding the challenge of an individual soldier in the American army at that time and space. The Allies, with the D-day invasion, gained a foothold in Europe. Once across the English Channel a gateway was opened for the Allies. Just establishing a foothold on the European continent was a monumental task. The next major task was to liberate an entire continent from Nazi domination. Ray was attached to the Cannon Company, 347<sup>th</sup> Infantry Regiment 87<sup>th</sup> Infantry Division. As part of an entire combat division, he and fellow soldiers traveled and fought through France, Luxembourg, Belgium, Germany and Czechoslovakia. To later generations of Americans, famous movies and history books popularized and chronicled towns and places named Metz, Saarbrücken, St. Vith, Koblenz, Bastogne to name a few. Ray and his outfit fought there. His unit crossed the Rhine and Moselle Rivers, natural defense lines en route to Germany. He also crossed the infamous Siegfried Line guarded by the 11<sup>th</sup> Panzer Division. His unit was redirected to bolster U. S. forces at the Battle of the Bulge. Ray's unit liberated the unspeakable Buchenwald Concentration Camp. Ray chooses not to discuss the vivid and shocking details of combat. They are bad memories created by worse events locked away forever as a faded part of a distant past.

**The Encounter** -While in Germany it was time for a night patrol. The platoon set out with Ray in the convoy as a radio operator and machine gunner in the last vehicle. A jeep mounted with a .30 caliber machine gun facing forward was Ray's combat assignment. Night patrols were not uncommon but posed a bit of a dilemma for vehicle drivers. In order to maintain concealment from the enemy, normal driving lights could not be used. So vehicles in this mode used diffused lights, referred to in military jargon as "cat eyes." Cat eyes were mounted to the back of every vehicle in line. Just follow the dim light ahead and you will be safely in line.

So in the dark of night, in a war zone and in harms way, Ray as gunner and the jeep driver move along a deserted rural roadway. Along the convoy route the lone jeep eventually falls behind the vehicle ahead of it. The cat eyes ahead dim and suddenly disappear. Fortunately, they dimly reappear further up the road. Now catching up to the other vehicles in procession the driver fails to realize the convoy just passed through an "S" turn in the road. Hence the disappearing light was the result of the turn rather than distance. As the cat eyes reappeared the vehicle was actually emerging from the turn. The jeep driver now sees the cat eyes and assumes the road to be a straight line. In short order he hits a wall on the side of the road. Ohhhnooo!

The two young GIs are fortunately okay. But the front side of the jeep is heavily damaged and not drivable. Of course. The jeep is now resting in a ditch. Of course. The convoy

unaware of the accident disappears into the darkness. Of course. They do have a radio which they quickly realize is in pieces. Of course. Now all they can do is wait and hope for help. Hopefully, the help isn't a Nazi patrol. They mount the machine gun on the side of the road and wait and wait. The third morning after the mishap they finally hear the unmistakable sound of tanks roaring and rumbling in the distance. As the column approaches, the fellows are relieved to recognize the tank silhouettes as American. As time passes the tanks come closer into clear view. However, leading the battle ready tank column is a reconnaissance vehicle. The M-80 was a vehicle built high off the ground with a gun turret perched higher on top, providing a clear view for shooting or observation. Distinctive to this particular M-80 were two red flags, one on each front fender. Emblazoned on each flag were three stars. Ohhhnooo!

The two weary disheveled privates stand at attention and salute, with their battered and broken jeep as a backdrop. The recon vehicle slowly approaches and stops beside them. The entire tank column comes to a halt. Standing high above Ray in the turret peering down on the scene, complete with his famous pearl handled pistols was none other than General George Patton. Momentary silence prevailed as the General surveyed the scene. Then the General spoke. "Son what the heck are you doing in that ditch?" Ray's response, "We wrecked the jeep. We were with the 347<sup>th</sup>." The general, "Oh you are with Colonel Bottner. You were lucky, he went up the road and got all shot up." Still assessing the scene from high on the turret, General Patton quizzically inquires about the machine gun pointed down the road. Ray said, "It is to kill the Nazis if they come down road, sir." Again, deafening silence. Finally, General George Patton clearly and loudly shouts, "Good!!"

Then Patton picked up his radio microphone and called the recovery unit. "Come out and get these two doggies from the 347<sup>th</sup> and their wrecked jeep. Take care of them, they did a good job." General Patton and the tank column simply continued on their way. A chance encounter long ago and far away.

The Brighton Township Historical Society is grateful to Ray for taking the time to share his story. After his military duties he graduated from Purdue University and earned an advance degree from Harvard University. Ray and his wife, Peggy, have been married 63 years and raised two sons and a daughter. Ray left the American military with the rank of Corporal. The following are his military awards: Combat Infantry Badge, Bronze Star Medal, Good Conduct Medal, European Theater Ribbon with three Campaign Stars, Army of Occupation Medal, a Presidential Unit Citation, Marksman M1 and Carbine and two Overseas Bars & Hash Marks. Ray, the BTHS honors your service to our country.



*During his service Ray Custard also collected military patches, some of which are shown here, and were displayed at a prior Historical Society program.*

## Please Support Your Fire Department



The Brighton Township Volunteer Fire Department is 100% volunteer and depends upon the goodwill donations of our residents and businesses. One of the Department's primary fund raisers is the mailing of their annual request for donations that is mailed to each Township resident and business in the Fall. Each home should have received this letter last month. The Department wishes to express their sincere thanks for all those who have responded to this appeal for donations. However, many residents have not responded and your donation is needed to continue the quality fire and emergency medical services that have always been offered by our Department. Their service depends largely on the support of the community and your annual donations. Each dollar donated is accounted for and is spent wisely, and all expenditures are subject to an outside professional audit by a CPA firm. Remember, your Fire Department is 100% volunteer.

Please do your share and mail your donation to Brighton Township VFD, P.O. Box 498, Beaver, PA 15009 or drop it off at the Municipal Building.

Support the  
Fire Department by  
Attending  
Fish Fries on the  
Following Dates!



January 17  
February 7 & 21  
March 7, 14, 21 & 28  
April 4, 11 & 18

Firemen's Social Hall  
5400 Dutch Ridge Road  
4:00 P.M. to 7:00 P.M.  
Takeouts available



### RECYCLABLE MATERIALS

#### All Paper



#### Manila & Brown Folders



#### Newspaper & Phone Books



#### Glossy Paper & Magazines



#### Junk Mail



#### Tin & Aluminum



#### Glass



#### Aseptic Containers



#### Plastic All containers labeled #1-7



## How to Prepare Your Materials

### Plastic Bottles and Jugs Only

- All containers labeled # 1-7 are accepted!
- Rinse, flatten and securely fasten cap back on.
- Labels do not need to be removed.
- Containers that originally held oil or chemicals must be completely emptied and not contain any potentially hazardous material.
- No plastic bags or buckets.
- Place in green recycling container with other recycling items.

### Aluminum, Bi-Metal & Tin Food and Beverage Containers and Aluminum Foil

- Rinse and flatten or crush containers.
- Labels do not need to be removed.
- Place in green recycling container with other recycling items.

### Glass (Clear, Brown and Green Bottles and Jars)

- Rinse.
- Labels do not need to be removed.
- Do not break glass.
- Do not include auto glass, light bulbs, porcelain, ceramic, plate glass or crystal.
- Place in green recycling container with other recycling items.

### Aseptic Containers (Milk Cartons)

- Rinse and flatten containers.
- Place in green recycling container with other recycling items.

### Newspaper and Other Paper Products

- Include newspaper, magazines, phone books, junk mail, and all other paper.
- Do not place in plastic bags.
- Cereal and cracker type boxes can be included – remove inner bags or liners and flatten.
- Place directly in green recycling container with other recycling items.

### Remember...

- Place your recycling container at roadside on the same day as your regular garbage collection during the recycling weeks.
- Place recyclables directly into recycling container. Do not place items in separate bags or they will not be collected.
- Recover your recycling container promptly after collection.
- Green recycling containers are available for purchase at the Brighton Township Municipal Building, 1300 Brighton Road.

### NON-RECYCLABLE MATERIALS

#### Food Waste



#### Glass Pane & Pyrex



#### Food Containers



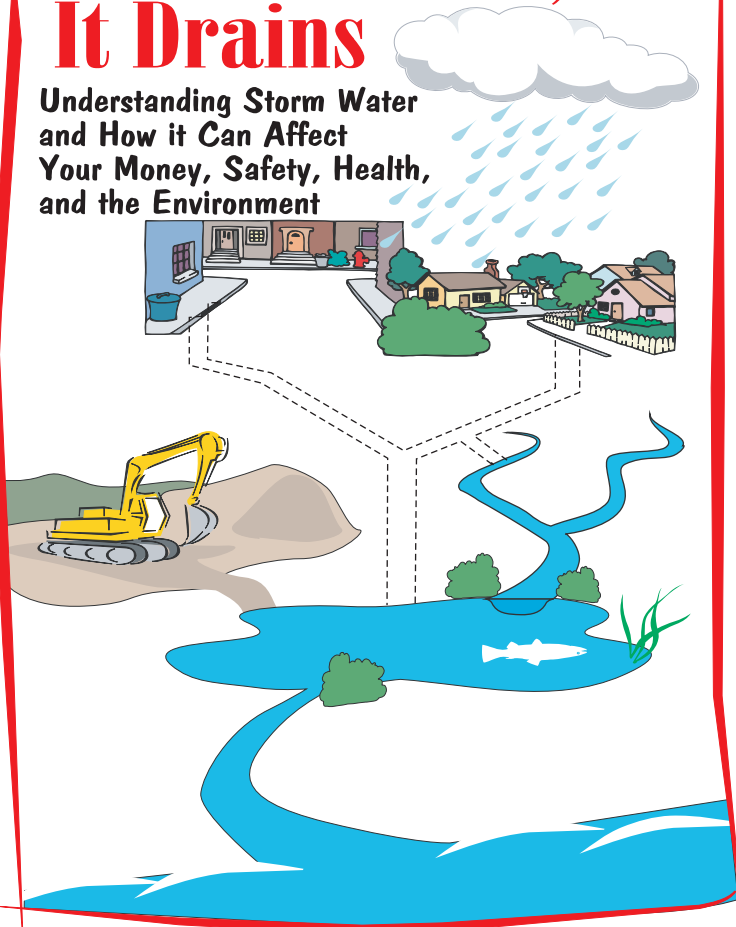
#### Ink/Toner Cartridges



RECYCLING IS EASY!

# When It Rains, It Drains

**Understanding Storm Water and How it Can Affect Your Money, Safety, Health, and the Environment**



## What is Storm Water?

Storm water is water from precipitation that flows across the ground and pavement when it rains or when snow and ice melt. The water seeps into the ground or drains into what we call storm sewers. These are the drains you see at street corners or at low points on the sides of streets. Collectively, the draining water is called storm water runoff.

## Why is Storm Water "Good Rain Gone Wrong?"

Storm water becomes a problem when it picks up debris, chemicals, dirt, and other pollutants as it flows or when it causes flooding and erosion of stream banks. Storm water travels through a system of pipes and roadside ditches that make up storm sewer systems. It eventually flows directly to a lake, river, stream, wetland, or coastal water. All of the pollutants storm water carries along the way empty into our waters, too, because storm water does not get treated!



*Pet wastes left on the ground get carried away by storm water, contributing harmful bacteria, parasites and viruses to our water.*



*Vehicles drip fluids (oil, grease, gasoline, antifreeze, brake fluids, etc.) onto paved areas where storm water runoff carries them through our storm drains and into our water.*



*Chemicals used to grow and maintain beautiful lawns and gardens, if not used properly, can run off into the storm drains when it rains or when we water our lawns and gardens.*

*Waste from chemicals and materials used in construction can wash into the storm sewer system when it rains. Soil that erodes from construction sites causes environmental degradation, including harming fish and shellfish populations that are important for recreation and our economy.*



## What Happens When It Rains?



Rain is an important part of nature's water cycle, but there are times it can do more damage than good. Problems related to storm water runoff can include:



*Flooding caused by too much storm water flowing over hardened surfaces such as roads and parking lots, instead of soaking into the ground.*

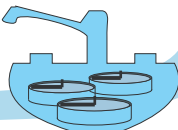
*Increases in spending on maintaining storm drains and the storm sewer system that become clogged with excessive amounts of dirt and debris.*



*Decreases in sportfish populations because storm water carries sediment and pollutants that degrade important fish habitat.*



*More expensive treatment technologies to remove harmful pollutants carried by storm water into our drinking water supplies.*



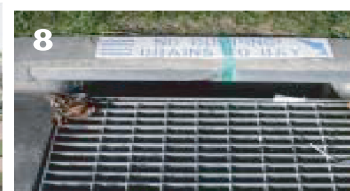
*Closed beaches due to high levels of bacteria carried by storm water that make swimming unsafe.*



We can help rain restore its good reputation while protecting our health and environment while saving money for ourselves and our community. Keep reading to find out how...

## Test Your Storm Sewer System Savy!

What does the storm sewer system look like in your community? See if you can identify which pictures are part of the storm sewer system.



(Answers are above right)

## Where To Go To Continue the Information Flow

Your community is preventing storm water pollution through a storm water management program. This program addresses storm water pollution from construction, new development, illegal dumping to the storm sewer system, and pollution prevention and good housekeeping practices in municipal operations. It will also continue to educate the community and get everyone involved in making sure the only thing that storm water contributes to our water is . . . water! Contact your community's storm water management program coordinator or the Pennsylvania Department of Environmental Protection for more information about storm water management.



Pennsylvania Department of Environmental Protection  
www.dep.state.pa.us

**1. Ditch** – Part of the storm sewer system. Most people think that the system is just a series of underground pipes. It can also include ditches used to convey storm water from the land to a receiving lake, river, or stream.

**2. Fire Hydrant** – Not part of the storm sewer system. Water sprayed from fire hydrants is not storm water, but is allowed by law to enter the storm sewer system.

**3. Curb with Storm Drain Inlet** – Part of the storm sewer system. Many people do not realize that this is an opening leading to the storm sewer system. Anything going into this inlet (e.g., trash, leaves, improperly disposed of hazardous materials) travel directly to a receiving lake, river, or stream without being treated first. Many communities stencil storm drains with "Do Not Dump" messages to let people know.

**4. Storm Sewer Outfall** – Part of the storm sewer system. An outfall is where storm water drains from the storm sewer system into a receiving lake, stream, or river. If there is a flow from an outfall when it isn't raining, there could be a problem with the system or someone has used a storm drain for illegally disposing of materials.

**5. Toilet** – Not part of the storm sewer system. Wastewater from sinks and toilets in houses and businesses travel through a sewer system constructed to carry sanitary wastes. In some instances, older communities may have a combined sewer system designed to carry both storm water and sanitary wastes.

**6. Septic System** – Not part of the storm sewer system. Homeowners use septic tanks to manage sanitary wastes on-site. Improperly maintained septic systems can leak and contribute pollutants to the storm sewer system, as well as directly to lakes, rivers, and streams.

**7. Roads and Other Paved Areas** – Not part of the storm sewer system. Roads and other hardened surfaces such as parking lots and sidewalks can accumulate pollutants (e.g., oil, grease, dirt, leaves, trash, pet wastes) that storm water eventually washes into the storm sewer system.

**8. Storm Drain Inlet** – Part of the storm sewer system. This is another example of what a storm drain may look like. Like the storm drain inlet shown in picture #3, anything that enters this drain will go directly to streams, rivers, and lakes without being treated first. It is important to recognize this as a storm drain to prevent it from being used as a trash can.

### Answers to Test Your Storm Sewer System Savvy:

## Restoring Rain's Reputation: What Everyone Can Do To Help

Rain by nature is important for replenishing drinking water supplies, recreation, and healthy wildlife habitats. It only becomes a problem when pollutants from our activities like car maintenance, lawn care, and dog walking are left on the ground for rain to wash away. Here are some of the most important ways to prevent storm water pollution:

- ◆ Properly dispose of hazardous substances such as used oil, cleaning supplies and paint—never pour them down any part of the storm sewer system and report anyone who does.
- ◆ Use pesticides, fertilizers, and herbicides properly and efficiently to prevent excess runoff.
- ◆ Look for signs of soil and other pollutants, such as debris and chemicals, leaving construction sites in storm water runoff or tracked into roads by construction vehicles. Report poorly managed construction sites that could impact storm water runoff to your community. (See the back of this brochure for contact information.)
- ◆ Install innovative storm water practices on residential property, such as rain barrels or rain gardens, that capture storm water and keep it on site instead of letting it drain away into the storm sewer system.
- ◆ Report any discharges from storm water outfalls during times of dry weather—a sign that there could be a problem with the storm sewer system.
- ◆ Pick up after pets and dispose of their waste properly. No matter where pets make a mess—in a backyard or at the park—storm water runoff can carry pet waste from the land to the storm sewer system to a stream.
- ◆ Store materials that could pollute storm water indoors and use containers for outdoor storage that do not rust or leak to eliminate exposure of materials to storm water.

## Reducing and Eliminating Sources of Stormwater Pollution

As part of the requirements of the Township's Municipal Separate Storm Sewer System (MS4) permit, the Township continues to distribute public education materials, including the When It Rains, It Drains brochure printed and distributed within this newsletter. It is important to re-emphasize several of the items included in the brochure.

Runoff from rain or snow can pick up several kinds of natural and man-made pollutants and deposit them in our waterways. These are considered non-point sources of pollution and can include:

- Excess fertilizers or herbicides and insecticides used to treat your lawn.
- Viruses and bacteria from decomposing pet wastes.
- Oil, grease and other chemicals from your vehicles.

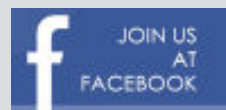
You can help by:

- Keeping debris out of storm sewers and drains.
- Properly disposing of household chemicals and not into storm sewers and drains.
- Wash your car on your lawn to prevent runoff – or use a car wash.
- Use low-phosphate or phosphate free detergents.
- Clean up after your pets.
- Prevent soil erosion and runoff.
- Participate in litter prevention or clean-up programs.



## Brighton Township Now on Facebook and Twitter

Please "like" us on Facebook and "follow" us on Twitter to keep up with current posts. Look for the Township seal to be certain you found the correct page. Look for these links on the Brighton Township web site [www.brightontwp.org](http://www.brightontwp.org).



While you are at it, sign up for our redesigned enews – a monthly electronic newsletter of local happenings



## **Winter Road Maintenance Reminder**

Please remove vehicles from the street during any snow event that requires plowing or the application of salt or cinders. There is reduced visibility for the drivers during snow storms or at night. Maneuvering a plow truck through parked traffic makes the job of the plow truck driver much more difficult. Also, Township Ordinance regarding snow removal does prohibit parking, or allowing to be parked, any motor vehicle or other vehicle on any public street within the Township following the deposit or accumulation of ice or snow of three (3) inches or greater in depth, until the snow has been completely plowed from the full width of the roadway. Violators are subject to a \$15 fine when ticketed by the Police Department, or towing when necessary.

## **Rental Registration Reminder**

Pursuant to Township Code, owners of rental properties located within the Township are required to file a semi-annual report for each rental property, listing the names of all tenants age 18 and over. The next semi-annual rental property registrations are due on or before February 1, 2014. Registration forms are available at the Municipal Building and on the Applications & Forms Page within the Resident's Center on the Township web site at [www.brightontwp.org](http://www.brightontwp.org). **It is the responsibility of the landlord to file in a timely manner.** The Township does not send notices. If you have had no tenant changes, you may report the information by calling 724-774-4800. Have questions? Please call the Township Office.

## **Tire Collection Program Continues to be Successful**



The Township is happy to report that 263 tires were collected during the September tire collection conducted in cooperation with the Independence Conservancy. During 2013 the Independence Conservancy, with their sponsoring partners, collected a total of 4,246 tires that may have otherwise been improperly disposed of. All of their workers are volunteers. All funds raised are put back into the local environment through stream bank stabilization, open space preservation, abandoned mine reclamation and other projects. Additional donations to Independence Conservancy are welcomed to help this non-profit organization's drive to eliminate illegal dumping and littering.

## **“Flushable” Household Items Create Problems in Sewage System**

Just because the package says “flushable” doesn't mean it's true. Many items marketed as disposable and/or flushable do not degrade like toilet paper, and they wind up clogging pipes, tangling pumps and have the potential of causing messy sewage backups into homes. The sewage system was designed to dispose of specific things. However, many people now use their toilets for the disposal of many of the modern products now available, and for which the sewage system was not designed for. The drains that connect your home to the main sewer are often no wider than 4 inches and are only big enough to carry water, toilet paper and human waste.

Due to the topography, the Brighton Township sewage system relies on pump stations in many areas to convey the sewage to the treatment plant where gravity flow is not possible. Swiffer microfiber dust pads and other like household cleaning products flushed down the toilet do not smoothly pass through pumps and can get caught up on the impellers of the pumps, creating maintenance and operational problems. These products can also cause problems with the mechanical equipment at the sewage treatment plant, and have to be removed during the treatment process.

**You can help by not flushing these and similar items:**

- Diapers - cloth, disposable or “flushable”
- Baby wipes, disinfectant wipes, moist wipes, etc.
- Toilet bowl scrub pads
- Swiffers
- Napkins (paper or cloth), paper towels
- Dental floss
- Hair
- Sanitary napkins, tampons, or any non-organic material
- Vitamins, medicines or other pharmaceuticals
- Wash cloths, towels, rags (any cloth item)
- Clothing
- Sheet plastic, or plastic of any kind

# 2014 Brighton Township Recycling Calendar

**WHAT:** Clear, brown and green glass bottles and jars; Aluminum, bi-metal and tin cans; Aluminum (tin) foil; Plastic bottles and jugs with the numbers 1 and 2 inside the recycling logo; Newspapers and magazines.

**WHERE:** Place your recycling container in the same area where the garbage is picked up.

**WHEN:** Your regular garbage collection day during the recycling weeks shown below in **GREEN** print if Route 1 (areas on & off of Dutch Ridge Road, and Dawson Ridge and Gypsy Glen Road) or in **RED** print if Route 2 (Tuscarawas Road from Dutch Ridge to Beaver)  
Contact J. Young Refuse at 724-573-0170 for any questions.

January							February							March						
S	M	T	W	T	F	S	S	M	T	W	T	F	S	S	M	T	W	T	F	S
			1	2	3	4						1							1	
5	6	7	8	9	10	11	2	3	4	5	6	7	8	2	3	4	5	6	7	8
12	13	14	15	16	17	18	9	10	11	12	13	14	15	9	10	11	12	13	14	15
19	20	21	22	23	24	25	16	17	18	19	20	21	22	16	17	18	19	20	21	22
26	27	28	29	30	31		23	24	25	26	27	28		23 <sup>30</sup>	24 <sup>31</sup>	25	26	27	28	29
April							May							June						
S	M	T	W	T	F	S	S	M	T	W	T	F	S	S	M	T	W	T	F	S
		1	2	3	4	5					1	2	3	1	2	3	4	5	6	7
6	7	8	9	10	11	12	4	5	6	7	8	9	10	8	9	10	11	12	13	14
13	14	15	16	17	18	19	11	12	13	14	15	16	17	15	16	17	18	19	20	21
20	21	22	23	24	25	26	18	19	20	21	22	23	24	22	23	24	25	26	27	28
27	28	29	30				25	26	27	28	29	30	31	29	30					
July							August							September						
S	M	T	W	T	F	S	S	M	T	W	T	F	S	S	M	T	W	T	F	S
		1	2	3	4	5						1	2		1	2	3	4	5	6
6	7	8	9	10	11	12	3	4	5	6	7	8	9	7	8	9	10	11	12	13
13	14	15	16	17	18	19	10	11	12	13	14	15	16	14	15	16	17	18	19	20
20	21	22	23	24	25	26	17	18	19	20	21	22	23	21	22	23	24	25	26	27
27	28	29	30	31			24 <sup>31</sup>	25	26	27	28	29	30	28	29	30				
October							November							December						
S	M	T	W	T	F	S	S	M	T	W	T	F	S	S	M	T	W	T	F	S
			1	2	3	4							1		1	2	3	4	5	6
5	6	7	8	9	10	11	2	3	4	5	6	7	8	7	8	9	10	11	12	13
12	13	14	15	16	17	18	9	10	11	12	13	14	15	14	15	16	17	18	19	20
19	20	21	22	23	24	25	16	17	18	19	20	21	22	21	22	23	24	25	26	27
26	27	28	29	30	31		23 <sup>30</sup>	24	25	26	27	28	29	28	29	30	31			

## Refuse & Recycling Program New Rates Effective January 1, 2014

Brighton Township's contract with J. Young Refuse for the collection of all residential refuse and recycling includes provisions for changes to the monthly collection charge based upon a fuel cost adjustment on a semi-annual (6-month) basis or if there is an escalation in the fees charged by the landfill utilized by the hauler. Fuel cost is calculated on a specific formula included in the contract. Based upon the semi-annual adjustment the January 1, 2014 rate is as follows:

<i>Base Rate July 1, 2013 to June 30, 2014</i> .....	\$10.72
<i>Tipping Fee Cost Adjustment calculated effective July 1, 2011</i> .....	\$ 0.04
<i>Tipping Fee Cost Adjustment calculated effective July 1, 2012</i> .....	\$ 0.05
<i>Fuel Cost Adjustment calculated effective January 1, 2014</i> .....	\$ 0.25
<i>Monthly Refuse Rate effective January 1, 2014</i> .....	\$11.06
<b><i>Quarterly Refuse Rate effective January 1, 2014</i></b> .....	<b>\$32.82</b>

Remember that additional fees are assessed for services other than curbside collection (backyard or at door service where specific contract restrictions apply) or streets that were not specified for curb service in the bid contract.

**Mandatory Participation** – Each residential unit is required to participate in the contracted refuse and recycling collection program. Brighton Township is also mandated by State law to provide curbside collection of recyclables to each residential unit. Township ordinance requires mandatory participation in these programs. As the contracted hauler provides the Township with the names and addresses of non-participants, notices will be sent. Continued non-participation can result in the filing of an enforcement notice with potential fines of not less than \$100 nor more than \$600, plus costs of prosecution, for each violation.

**Excluded Items** – Contract specifications require the collection of rubbish and other bulky waste. Bulky waste includes appliances, furniture, furnishings, rugs/carpet (when cut in lengths of not more than 4-feet and placed in rolls), toilets, and other items. However, there are items excluded from collection. Following is a list of items excluded from curbside collection as part of the contract. However, this list should not be considered as a final complete list, as there is always the chance that an unforeseen circumstance or item has not been considered. Refuse should be placed for collection in bags not exceeding 40 pounds or 40 gallons in size.

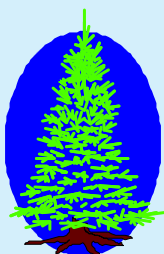
Excluded items are: Tires, Yard Waste, Christmas Trees, Construction Debris, Vehicle Parts or Batteries, Paints, Liquids or Fluids and Hazardous Wastes. Loose debris must be in a box or bag. The contractor will not be required to pick up loose debris. No steel or iron posts or rods that may damage garbage packers. The contractor is not expected to dismantle items placed out for collection. Items specified as items to be separated for recycling are not to be commingled with refuse for the purpose of being discarded.

Items containing Freon gas will not be picked up unless the gas or other cooling material has been properly removed in accordance with applicable laws and proof is provided to the collector.

**Recycling** – Recycling is collected curbside every other week. Refer to the Recycling Calendar included with this newsletter to determine your collection week. Please use an easily identifiable green container for placement of the recycling. Holes should be placed in the bottom of the container for drainage. Recycling cans with lids are available for purchase at the Township Office at a cost of \$10. Recycling is mandatory under state law and enforceable by Township ordinance. Recyclable items that are prepared improperly, or are mixed with household refuse, will not be collected, or will be disposed of with the refuse. Each of you can help improve the success rate of the Township's recycling program.

- **Special Note:** Please crush or flatten the large plastic containers. Otherwise they take up a lot of space and limit the volume of recycling that can be collected within the recycling truck.

### Free Christmas Tree Disposal at Yard Waste Site



Christmas trees are an excluded item in the Township's refuse collection contract. However, residents can drop off Christmas trees at no charge at the Township's yard waste site located at 1250 Brighton Road. Trees must be removed from any tree bag and have all tinsel or other decorations removed.

### What we feed into our storm drains can poison our rivers.

When the rain falls and the snow melts, a flood of water runs off our roofs, roads and yards and down into our streets. Everything the water touches is swept down those streets and fed directly into our storm drains. And then flows out into our rivers—the major source of our drinking water.

Trash. Paint. Oil. Fertilizers. Animal waste. Anything in the path of the storm water can find its way to our rivers through our storm drains.

But there is something we can do about it. In fact, a lot



of dedicated people and municipalities are working on it right now. You can help too.

Use environmentally friendly lawn and garden products. Properly dispose of oil, paints and other household chemicals. And please, don't litter the street or the landscape.

To find out more, visit our website. And discover how to keep our rivers from going down the drain.



Clean water starts in our own backyard. Go to [3riverswetweather.org](http://3riverswetweather.org) for a free guide on how you can help.



## 4<sup>th</sup> Quarter and Final Earned Income Tax Returns

Please be reminded that 4<sup>th</sup> Quarter returns for the earned income taxes are due by January 31<sup>st</sup> and Final Returns are due by April 15<sup>th</sup>. Employed residents of Brighton Township are subject to a one percent (1.0%) tax on gross earnings. This tax is paid to the Beaver Area School District and Brighton Township at 1/2 of 1% each. The tax must be paid quarterly to avoid penalty. If you are employed in Pennsylvania, it is mandatory, with a few exceptions, that your employer withholds the tax and your obligation is fulfilled except for the filing of a final return by April 15<sup>th</sup>. However, it is the employed person's responsibility to pay the tax, so payment should be verified. **Failure to file a final return, even when no tax is due, makes individuals liable for penalty.**

*Upcoming payment schedules:*

### Earned Income Period

4<sup>th</sup> Qtr: Oct., Nov., Dec. .... On or Before January 31<sup>st</sup>  
Final Return - Verification Needed ..... By April 15<sup>th</sup>

### Payment is Due

The EIT Collector for all of Beaver County is Berkheimer. 4<sup>th</sup> Quarter 2013 estimated payments and Final payments/returns should be sent to Berkheimer. Forms can be obtained from the Berkheimer web site at [www.hab-inc.com](http://www.hab-inc.com). They can also be reached at 1-866-701-7206.

**The PSD Code for Brighton Township and Beaver Area School District is – 040303.**

## Residency Certification Form

All employers in Pennsylvania were required to withhold the local EIT for all employees. Consequently, if you are employed within Pennsylvania, your employer, with a few exceptions, is required to withhold your tax at the rate where you live (1.0% with ½% to each Brighton Township and Beaver Area School District) and it will be directed to your home municipality and school district.

Each employee is required to file with his or her employer a **Residency Certification Form**. Therefore, it is important that you properly complete this form by identifying Brighton Township as your place of residence. Political Subdivision Codes are used to identify the municipalities and school districts for each tax collection district.

## NOTICE

**If you are self employed, work out of state or are a federal employee you are required to pay the tax quarterly or be subject to additional penalty, interest and costs.**

## Employer Obligations Under Act 32

First, all employers within Brighton Township should be registered with Berkheimer.

Second, employers are to fill out a Residency Certification Form for each of their employees and have it signed by the employee. Employers retain this form for their records. The employee must provide updated information, sign and date a new form upon change of address.

Third, employers must send withheld taxes for all employees to Berkheimer. The Berkheimer web site is [www.hab-inc.com](http://www.hab-inc.com). They can also be reached at 1-866-701-7206.

## Real Estate Tax Information

The 2014 Brighton Township Real Estate Tax bills will be mailed March 1, 2014. If a mortgage company does not hold your taxes in escrow and you do not receive your tax bill, please contact the tax collector.

Unpaid 2013 Beaver Area School District Real Estate Tax bills will be filed April 1, 2014.

### Office Hours:

Tuesday - 4:00 p.m. to 8:00 p.m.

Wednesday - 9:00 a.m. to 1:00 p.m.

Thursday - 9:00 a.m. to 1:00 p.m.

Last (2) Saturdays of each month of the discount:  
9:00 a.m. to 12:00 Noon (March & April)

Personal appointments may be made by contacting the tax office.

The tax collection office is located in the lower level of the Municipal Building, 1300 Brighton Road. A drop box has been installed for your convenience. If you have any questions or concerns, please do not hesitate to contact James W. Onuska, Brighton Township Real Estate Tax Collector at 724-774-2622.

**NOTE:** When mailing, please do not include your tax payments within the same envelope as your water & sewer payments. These items should be mailed independent of each other. Those utilizing bill payment services should also notify their bank of this requirement.

## Township Continues Support for Library

The Township is pleased to be able to continue its support of the Beaver Area Memorial Library by including a \$25,000 contribution in the 2014 budget. Brighton Township has over 2,000 library card holders, the most of any municipality. During the year the library provides many programs and classes for both children and adults. At the library you can also enjoy the latest bestseller, check out a favorite movie on DVD, download an eBook, download an audiobook, read a newspaper or magazine, get free wireless access and many other opportunities.

We thank the library's staff and Board of Directors for their efforts and hard work in providing the library's many services to our residents. Please consider making a donation of your time and/or money to the library. The library is located at 100 College Avenue, Beaver. You may contact them at 724-775-1132.

### Tax Preparation

Starting in February, AARP volunteers will be available at the library to prepare state and federal tax forms. This free tax preparation is available for senior citizens and low income families by appointment only. Call the library at 724-775-1132 for more information.

### Annual Soup Luncheon

Mark your calendar now for the library's annual soup luncheon on Saturday, March 1<sup>st</sup> from 11:00 a.m. to 2:00 p.m. This event will feature a variety of homemade soups and desserts that can be purchased at a reasonable cost. The event is sponsored by the Friends of the Library.

# Brighton Township

1300 BRIGHTON ROAD  
BEAVER, PA 15009

prsrtd  
U.S. POSTAGE  
**PAID**  
Permit No. 263  
Beaver, PA 15009

## **MEETING SCHEDULE**

*All meetings are held at the Municipal Building.  
Meetings are subject to change - call to confirm  
meeting date and time — 724-774-4800*

### **BOARD OF SUPERVISORS**

Second Monday of each month - 7:00 p.m.

### **PLANNING COMMISSION**

First Monday of each month - 7:30 p.m.

### **MUNICIPAL AUTHORITY**

Third Monday of each month - 8:00 p.m.

### **SEWAGE AUTHORITY**

Third Monday of each month - 6:45 p.m.

### **ZONING HEARING BOARD**

As requested

### **PARK AND RECREATION BOARD**

Fourth Wednesday of each month - 7:00 p.m.  
Third Wednesday in November & December.

## **Master Plan Being Prepared for Two Mile Run Park**

Brighton Township has engaged Pashek Associates to prepare a master plan for Two Mile Run Park, one of the Township's most used park facilities. The Master Park Plan will provide a process and timeline to improve the park for the community. As part of the planning process, opportunities for future park improvements will be evaluated. These opportunities can include additional shelters or lodge, trails or connections within the park. An evaluation of the existing park facilities has already been initiated as part of the planning process. Recommendations to address facility deficiencies, facility upgrades and/or improvements will be included in the plan. Locations for future improvements and preliminary cost estimates will be presented in the plan. A minimum of two public joint meetings between the Supervisors and Park & Recreation Board will be conducted during the planning process. Watch for notices regarding these sessions. The goal is to have the plan completed by April 2014.

## **Park & Recreation Board Reflections**

With the December 14<sup>th</sup> trip to the Riverside Inn & Dinner Theatre, the Park & Recreation Board has concluded another year of planning and implementing activities for the enjoyment of Township residents. These activities are in addition to the very successful baseball, softball, football and soccer programs conducted at Township Parks by the various youth organizations. The annual Easter Egg Hunt at Two Mile Run Park remains one of our most popular programs. In 2013 the Township continued to sponsor a 6-week Summer Playground Program at the Dutch Ridge Elementary School in cooperation with the Beaver Area School District by contracting with the Beaver County YMCA. The Board also planned several other bus trips this year that were a lot of fun, including two trips to PNC Park to see the Pirates in action.

As always, the Board is looking for input on events or trips to sponsor. If you have any ideas on new activities or keeping the old, please don't hesitate to let us know!