

# Virtual Workshop | Implementable Comprehensive Plan



**Instructions:** Brighton Township is continuing a public engagement process to gather community input for a new Comprehensive Plan to guide future policy decisions and development. The Community Survey process that concluded earlier in the year revealed several public preferences:

- a desire to preserve the overall rural character of the community
- a need for increased bicycle and pedestrian connections
- the I-376 Interchange as the most appropriate location for future development

The Township is encouraging residents to shape the future of Brighton Township by participating in a Virtual Workshop to gain a deeper understanding of the public’s preferences on these planning issues.

We encourage residents to participate in the Virtual Workshop online at:

[www.brightontwp.org/virtual-workshop/](http://www.brightontwp.org/virtual-workshop/)

If you choose to complete this print copy instead, please return it by mail to 1300 Brighton Road Beaver, PA 15009, or drop off in person at the Municipal Building.

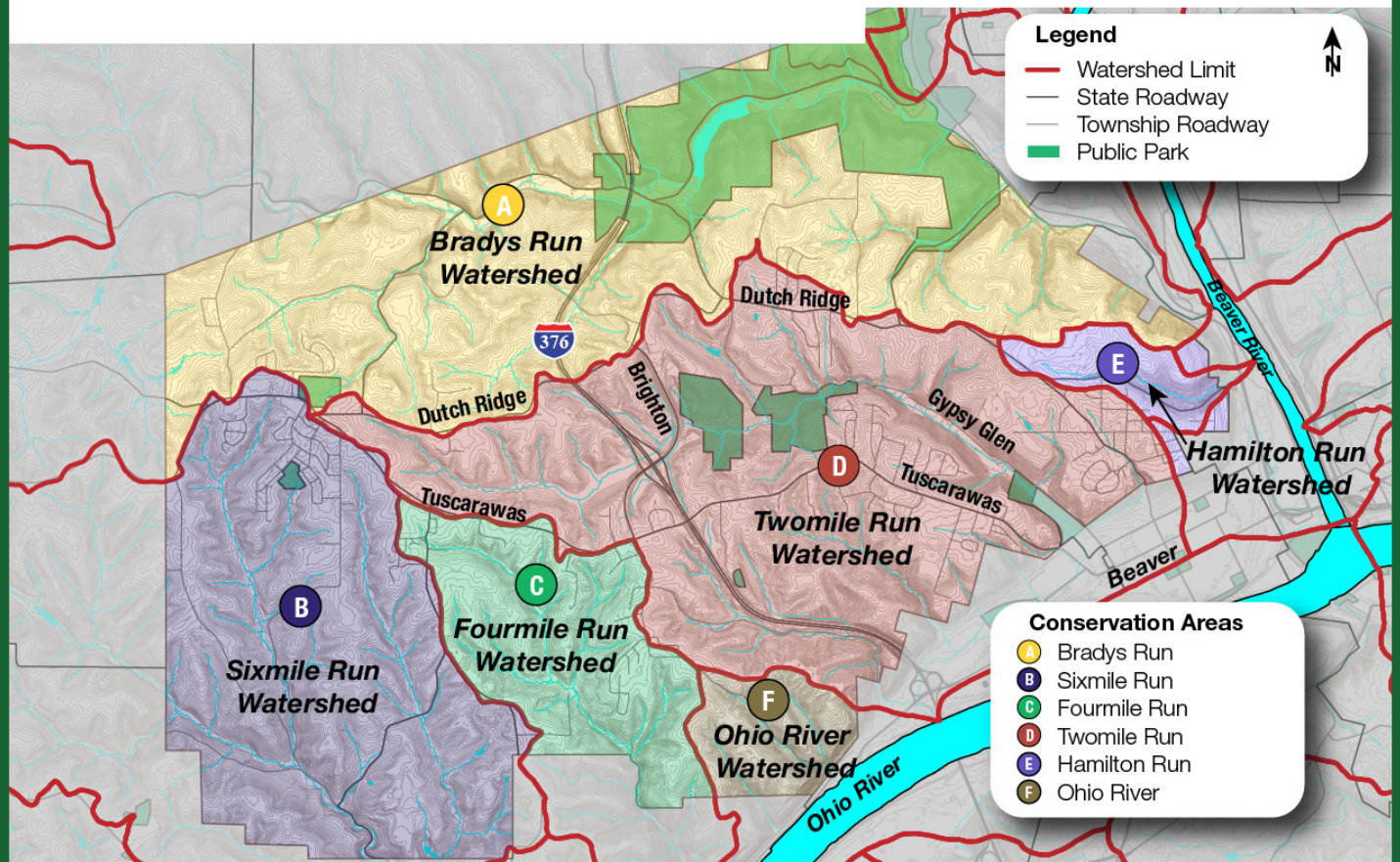
## Conservation of Land

1. Rank in order of preference your most desired area for the Township to conserve land: (1 = most desired; 6 = least desired)

- \_\_\_\_\_ A) Bradys Run Watershed
- \_\_\_\_\_ B) Sixmile Run Watershed
- \_\_\_\_\_ C) Fourmile Run Watershed
- \_\_\_\_\_ D) Twomile Run Watershed
- \_\_\_\_\_ E) Hamilton Run Watershed
- \_\_\_\_\_ F) Ohio River Watershed

2. Which type of conservation would you most like to see?

- Open Space
- Farmland
- Riparian (Along Streams/Rivers)
- Wetlands
- Hillside / Steep slopes
- I do not want additional land conserved within the Township.



PLEASE FLIP OVER FOR MORE QUESTIONS



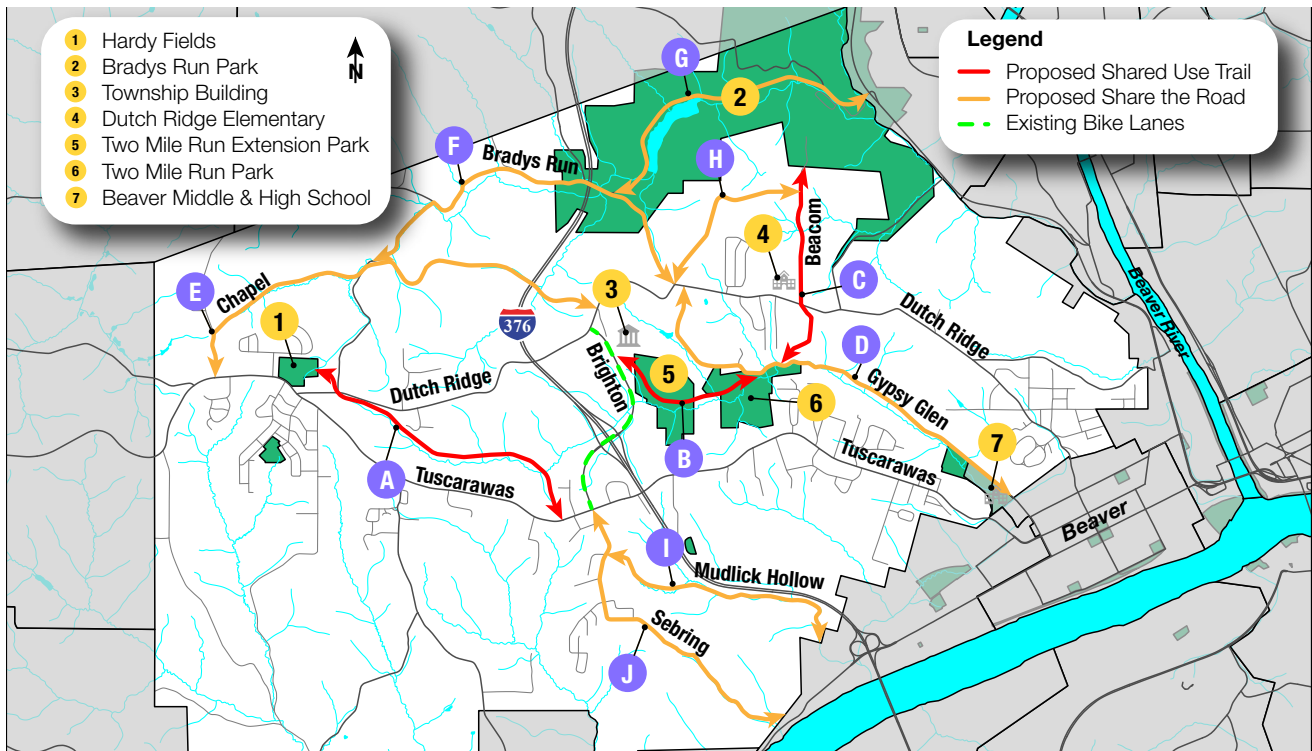
## Pedestrian & Bicycle Connections

3. Rank in order of preference your most desired **off-road shared use trail connections** from the following three options on the map below: (1 = most desired; 3 = least desired)

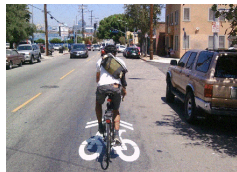
- \_\_\_\_\_ A) Shared Use Trail - From Hardy Fields to Tuscarawas Road, along Two Mile Run Creek Corridor
- \_\_\_\_\_ B) Shared Use Trail - From Township Municipal Building to Two Mile Run Park
- \_\_\_\_\_ C) Shared Use Trail - From Two Mile Run Park to Bradys Run Park

Rank in order of preference your most desired **“Share the Road” bicycle routes** from the following six options on the map below: (1 = most desired; 6 = least desired)

- \_\_\_\_\_ D) Share the Road Signage - Along Gypsy Glen Road from Dutch Ridge Road to Beaver Area High School
- \_\_\_\_\_ E) Share the Road Signage - Along Chapel/Darlington Roads from Tuscarawas Road to Dutch Ridge Road
- \_\_\_\_\_ F) Share the Road Signage - Along Grange/Bradys Run Road from Chapel Road to Dutch Ridge Road
- \_\_\_\_\_ G) Share the Road Signage - Along Bradys Run Road within Bradys Run Park
- \_\_\_\_\_ H) Share the Road Signage - Along Bradys Ridge Road from Dutch Ridge Road to Beacom Drive
- \_\_\_\_\_ I) Share the Road Signage - Along Mudlick Hollow Road from Sebring Road to Township Line



**Share the Road**  
(Bikes share roadway with vehicles)

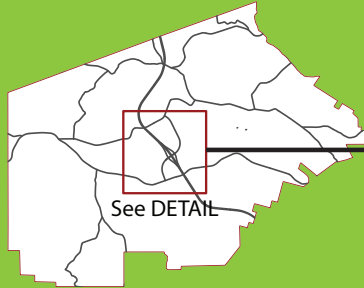


**Shared Use Trail**  
(Off-road facility for bikes and pedestrians)



# Virtual Workshop | Implementable Comprehensive Plan

Potential I-376 Interchange Development Area Map and Detail



## I-376 Interchange Development Area



4. Circle your two most desired end uses that you would like to see within the potential development area illustrated to the right:

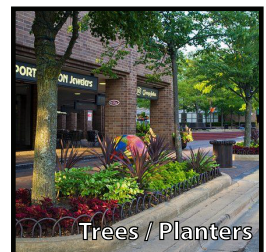


I do not desire development in this area.

Please specify any end use(s) you would like to see other than the options depicted above:

---

5. Circle your two most desired public space enhancements for the potential development area illustrated above:



I do not desire enhancements within this development. A development that meets current Township code is sufficient.

PLEASE FLIP OVER FOR MORE QUESTIONS





## Residential Property Maintenance

6. Should the Township require annual inspections of Residential Rental Properties?

- Yes
- No
- Maybe

## Other Comments

7. Please express any additional thoughts you have about each of the following topics in Brighton Township in the spaces below.

### Conservation of Land:

---

---

---

---

### Pedestrian & Bicycle Connections:

---

---

---

---

### I-376 Interchange Development Area:

---

---

---

---