

Meeting Summary

Implementable Comprehensive Plan



A third meeting of the Steering Committee for the Brighton Township Implementable Comprehensive Plan update was held virtually on August 20, 2020, via Zoom. The discussion centered around the development of the Virtual Workshop survey instrument.

This document summarizes the draft document and revisions incorporated based on the group's discussion:

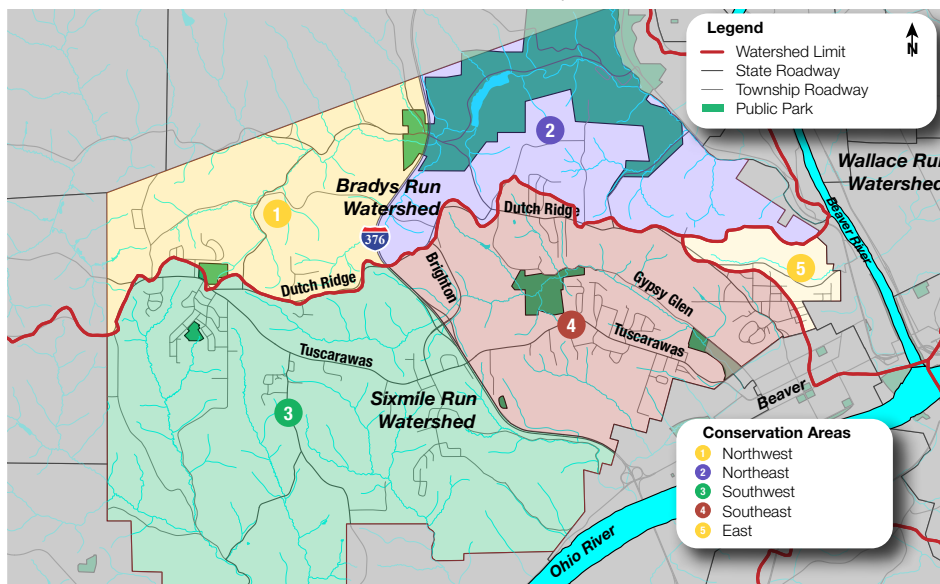
Conservation of Land

1. Which area illustrated in the map below would you most like to see additional land conservation (ecological preservation) within?

- ☐ 1) Northwest
- ☐ 2) Northeast
- ☐ 3) Southwest
- ☐ 4) Southeast
- ☐ 5) East
- ☐ I do not want additional land conserved within the Township.

2. Which type of conservation would you most like to see?

- ☐ Open Space
- ☐ Farmland
- ☐ Riparian (Along Streams/Rivers)
- ☐ Wetlands
- ☐ Hillsides / Steep slopes
- ☐ I do not want additional land conserved within the Township.



Discussion

Slope steepness was deemed to add clarity to the map so topographic contours were added. Including representative images was discussed but not included due to space limitations.

Answer choices will be ranked in order of preference to solicit more detailed feedback.



Steering Committee Meeting #3
August 20, 2020

Meeting Summary

Implementable Comprehensive Plan

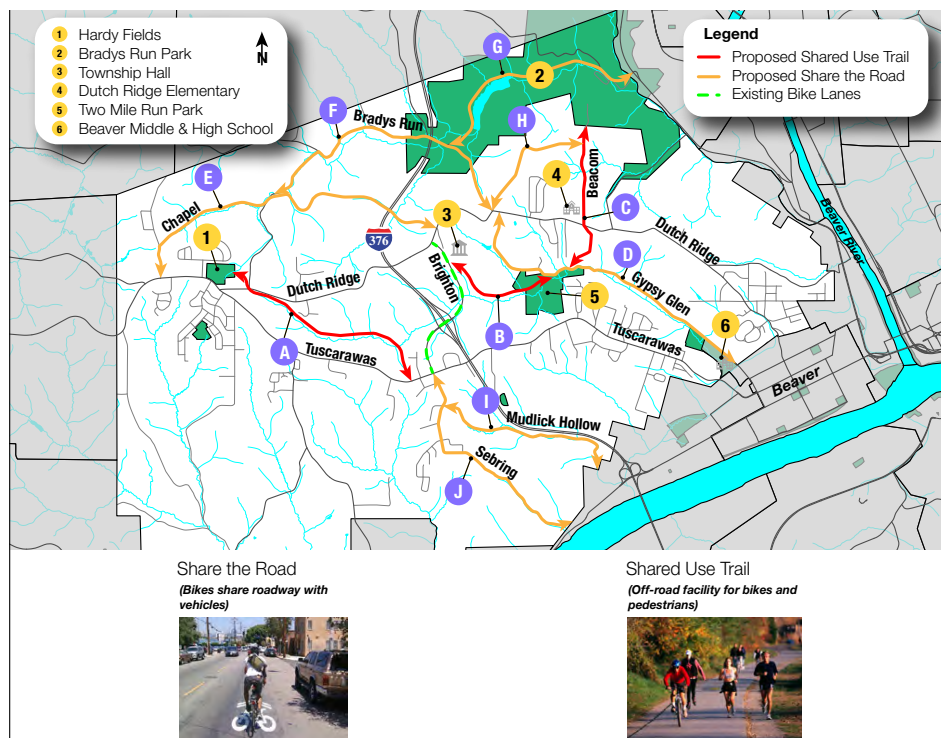
Pedestrian & Bicycle Connections

3. Rank in order of preference your most desired **off-road shared use trail connections** from the following three options on the map below: (1 = most desired; 3 = least desired)

- _____ A) Shared Use Trail - From Hardy Fields to Tuscarawas Road
- _____ B) Shared Use Trail - From Township Hall to Two Mile Run Park
- _____ C) Shared Use Trail - From Two Mile Run Park to Bradys Run Park

Rank in order of preference your most desired **"Share the Road" bicycle routes** from the following six options on the map below: (1 = most desired; 6 = least desired)

- _____ D) Share the Road Signage - Along Gypsy Glen Road from Dutch Ridge Road to Beaver High School
- _____ E) Share the Road Signage - Along Chapel Road from Tuscarawas Road to Dutch Ridge Road
- _____ F) Share the Road Signage - Along Bradys Run Road from Chapel Road to Dutch Ridge Road
- _____ G) Share the Road Signage - Along Bradys Run Road within Bradys Run Park
- _____ H) Share the Road Signage - Along Bradys Run Road from Dutch Ridge Road to Beacon Road
- _____ I) Share the Road Signage - Along Mudlick Hollow Road from Sebring Road to Township Line



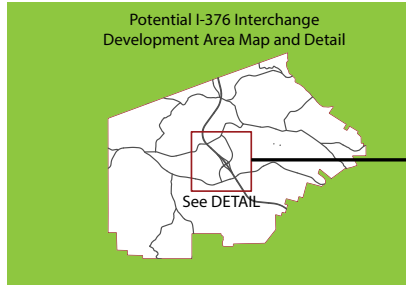
Discussion

The potential for Tuscarawas Rd bicycle facilities as an answer choice was discussed. The consensus was that Tuscarawas Rd is very dangerous for cyclists and the addition of bicycle lanes would be cost-prohibitive given that other options are more readily implementable along alternative routes. As such answer choices will focus on off-road trails and other on-road bicycle routes.

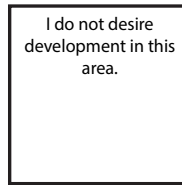
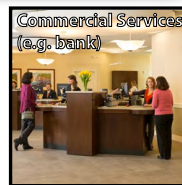
Meeting Summary

Implementable Comprehensive Plan

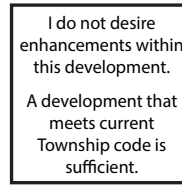
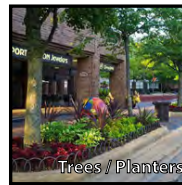
I-376 Interchange Development Area



4. Circle your two most desired end uses that you would like to see within the potential development area illustrated to the right:



5. Circle your two most desired public space enhancements for the potential development area illustrated above:



Discussion

An "Other" choice should be added as an open-ended response for desired end uses.

Meeting Summary

Implementable Comprehensive Plan

Residential Property Maintenance

6. Should landlords be required to register with the Township through a Registration Program for Residential Rental Properties?

- ☐ Yes
- ☐ No
- ☐ Maybe

Other Comments

7. Please express any additional thoughts you have about each of the following topics in Brighton Township in the spaces below.

Conservation of Land:

Pedestrian & Bicycle Connections:

I-376 Interchange Development Area:

Discussion

A residential rental registration program is already in place. Question 6 should be revised to read: "Should the Township require annual inspections of Residential Rental Properties?"

Meeting Summary

Implementable Comprehensive Plan

Other Discussion: Conservation of Land

Steering Committee member Gary Gardner shared a presentation detailing potential benefits of land conservation due to avoided increases in future property taxes due to additional residential development and student enrollment at Beaver Area School District.

Bryan Dehart is interested in exploring the potential of a voter approved referendum to collect additional income tax to be used for open space land acquisition (see below).

The group agreed to discuss the fiscal impacts of land conservation in more detail at the next Fall meeting.

Open Space Referendum

Municipalities are authorized by PA Act 153 ("Open Space Lands, Acquisition and Preservation") to purchase land or easements for the purpose of conservation. Local governments may levy a tax on real estate or earned income above the existing limits of the Commonwealth's laws, but only if they first receive referendum approval from the voters. A plan to protect these resources is required prior to expenditures of open space tax revenue.

[source: Pennsylvania Land Choices, An Educational Guide, Pennsylvania Department of Natural Resources in partnership with Pennsylvania Land Trust Association]

Act 115 of 2013 Improves PA's Open Space Law

Allows Some Revenue to be Used for Maintenance and Development

The amendment provides that in addition to acquiring land and easements, dedicated open space taxes may now be used to:

- Develop, improve, design, engineer and maintain open space acquired with dedicated open space taxes in order to provide open space benefits.* (Up to 25% of open space taxes may be used for this purpose.)
- Prepare the resource, recreation or land use plan needed to acquire open space under the law.

The new flexibility to use a portion of the taxes for development and maintenance enables municipalities with well established open space protection programs to better steward their protected lands and build trails and other recreational facilities that provide open space benefits. This flexibility may also encourage more municipalities to hold referenda to establish open space programs now that they know that they can use a portion of the revenue to care for and create recreational opportunities on the open space.

[source: <https://conservationadvocate.org/2014/01/30/act-115-of-2013-improves-pas-open-space-law/>]