



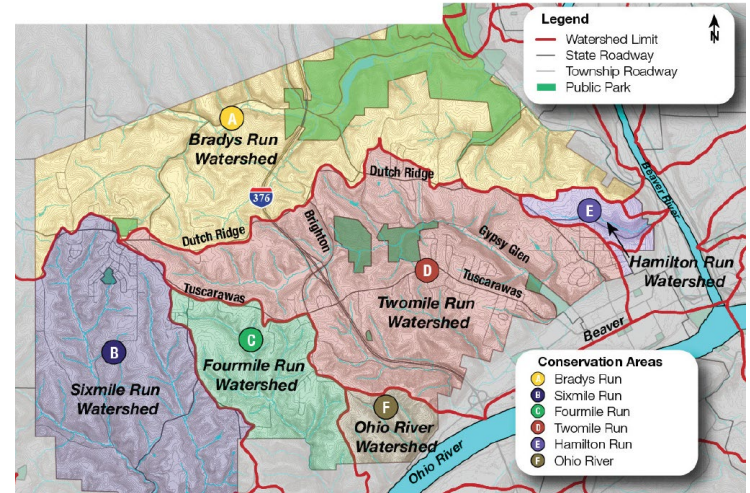
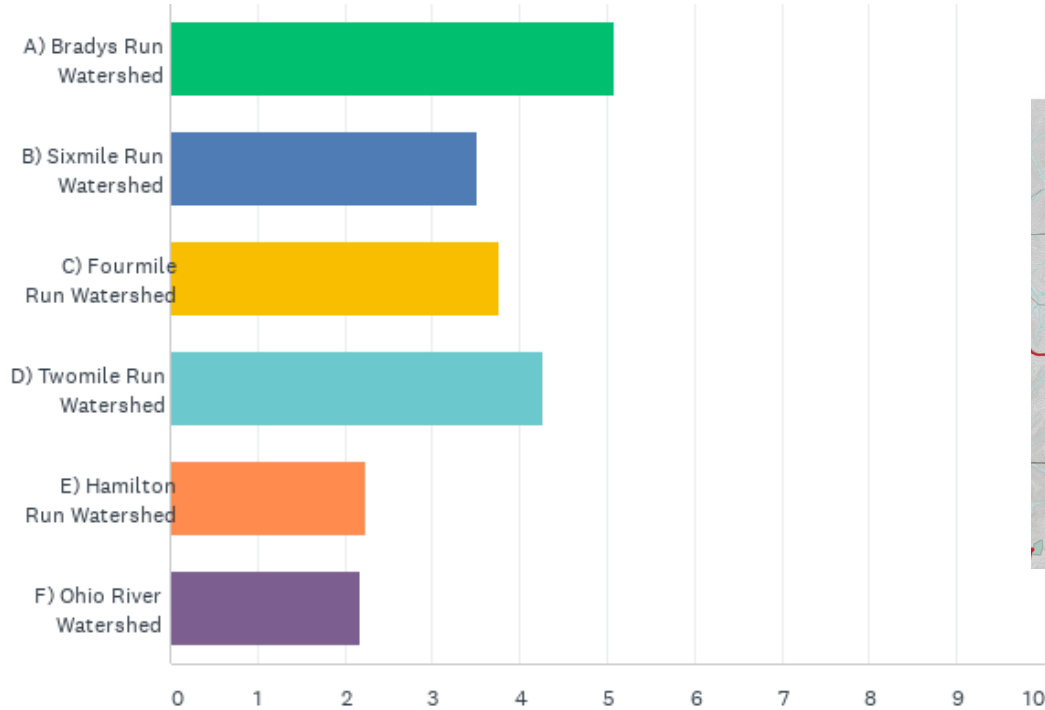
Virtual Workshop - Brighton Twp. Comprehensive Plan

Summary of Results

187 Total Responses

Q1: Rank in order of preference your most desired area for the Township to conserve land: (1 = most desired; 6 = least desired)

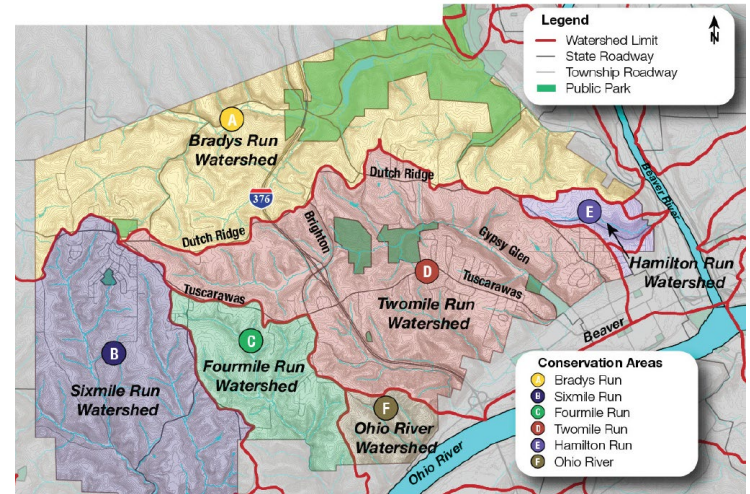
Answered: 176 Skipped: 11



Q1: Rank in order of preference your most desired area for the Township to conserve land: (1 = most desired; 6 = least desired)

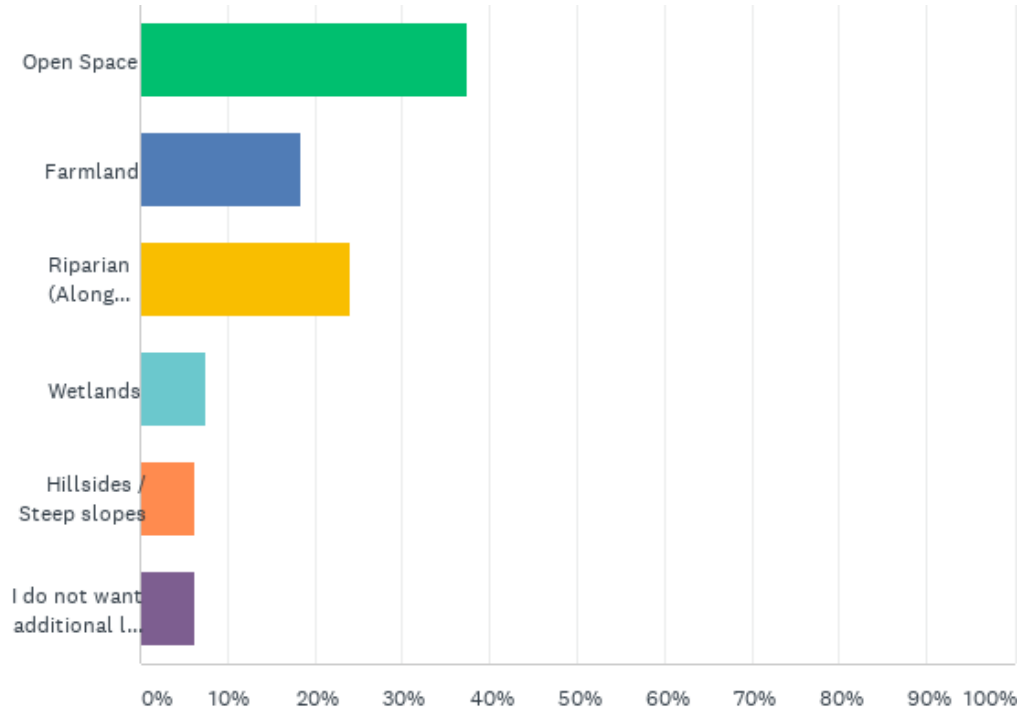
Answered: 176 Skipped: 11

	1	2	3	4	5	6	TOTAL	SCORE
A) Bradys Run Watershed	53.14% 93	24.57% 43	11.43% 20	4.00% 7	2.29% 4	4.57% 8	175	5.09
B) Sixmile Run Watershed	8.72% 15	23.26% 40	16.28% 28	26.74% 46	12.79% 22	12.21% 21	172	3.52
C) Fourmile Run Watershed	8.14% 14	17.44% 30	33.14% 57	27.91% 48	10.47% 18	2.91% 5	172	3.76
D) Twomile Run Watershed	24.71% 43	26.44% 46	20.11% 35	15.52% 27	6.32% 11	6.90% 12	174	4.27
E) Hamilton Run Watershed	3.49% 6	2.33% 4	8.72% 15	11.05% 19	48.26% 83	26.16% 45	172	2.23
F) Ohio River Watershed	2.91% 5	6.40% 11	9.88% 17	13.95% 24	19.77% 34	47.09% 81	172	2.17



Q2: Which type of conservation would you most like to see?

Answered: 174 Skipped: 13



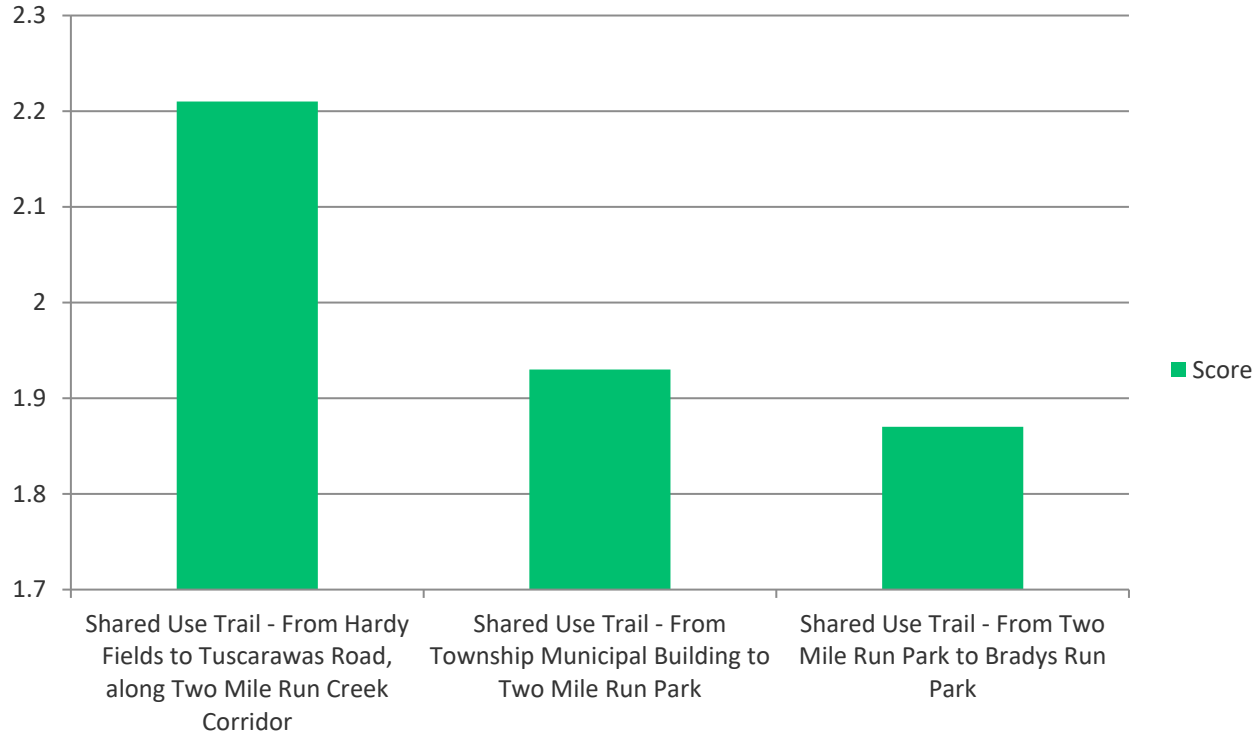
Q2: Which type of conservation would you most like to see?

Answered: 174 Skipped: 13

ANSWER CHOICES	RESPONSES	
Open Space	37.36%	65
Farmland	18.39%	32
Riparian (Along Streams/Rivers)	24.14%	42
Wetlands	7.47%	13
Hillsides / Steep slopes	6.32%	11
I do not want additional land conserved within the Township.	6.32%	11
TOTAL		174

Q3: Rank in order of preference your most desired off-road shared use trail connections from the following three options on the map below: (1 = most desired; 3 = least desired)

Answered: 162 Skipped: 25



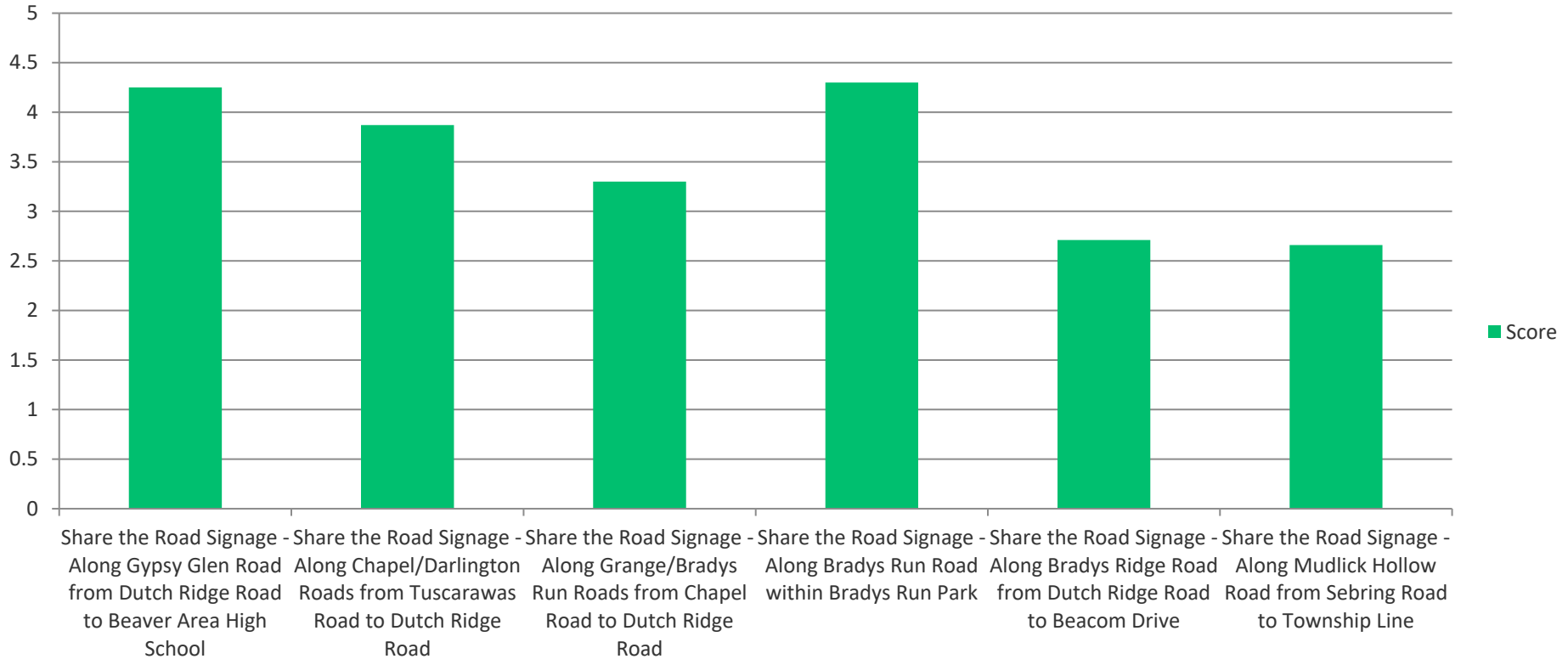
Q3: Rank in order of preference your most desired off-road shared use trail connections from the following three options on the map below: (1 = most desired; 3 = least desired)

Answered: 162 Skipped: 25

	1	2	3	TOTAL	SCORE
Shared Use Trail - From Hardy Fields to Tuscarawas Road, along Two Mile Run Creek Corridor	48.13% 77	24.38% 39	27.50% 44	160	2.21
Shared Use Trail - From Township Municipal Building to Two Mile Run Park	25.00% 40	43.13% 69	31.87% 51	160	1.93
Shared Use Trail - From Two Mile Run Park to Bradys Run Park	27.33% 44	32.30% 52	40.37% 65	161	1.87

Q4: Rank in order of preference you most desired "Share the Road" bicycle routes from the following six options on the map below: (1 = most desired; 6 = least desired)

Answered: 155 Skipped: 32



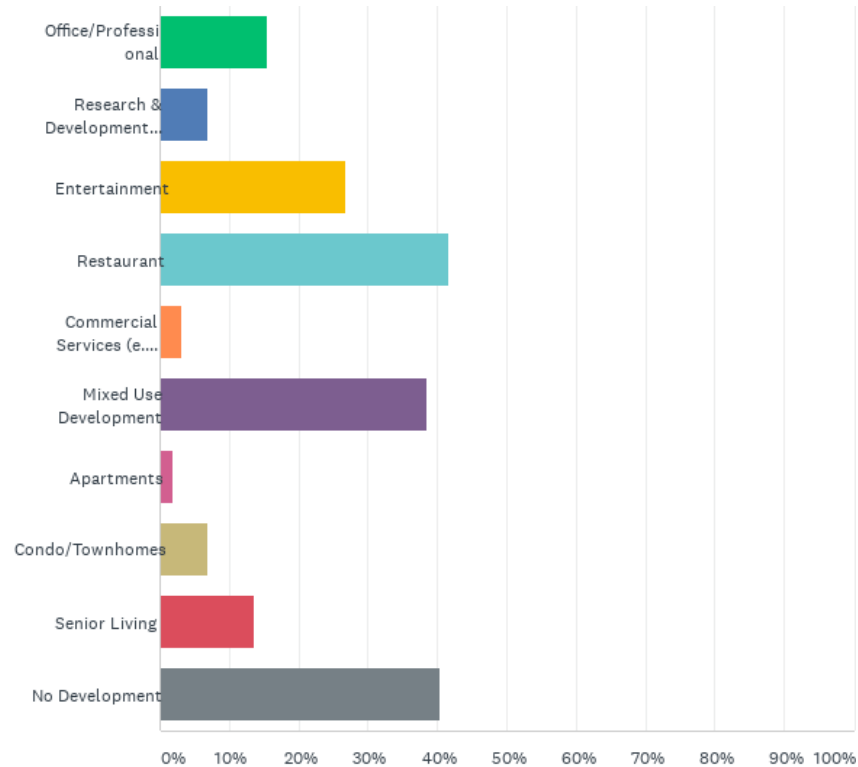
Q4: Rank in order of preference you most desired "Share the Road" bicycle routes from the following six options on the map below: (1 = most desired; 6 = least desired)

Answered: 155 Skipped: 32

	1	2	3	4	5	6	TOTAL	SCORE
Share the Road Signage - Along Gypsy Glen Road from Dutch Ridge Road to Beaver Area High School	28.48% 43	25.83% 39	15.23% 23	12.58% 19	8.61% 13	9.27% 14	151	4.25
Share the Road Signage - Along Chapel/Darlington Roads from Tuscarawas Road to Dutch Ridge Road	17.22% 26	22.52% 34	21.19% 32	16.56% 25	14.57% 22	7.95% 12	151	3.87
Share the Road Signage - Along Grange/Bradys Run Roads from Chapel Road to Dutch Ridge Road	2.65% 4	13.25% 20	28.48% 43	28.48% 43	21.85% 33	5.30% 8	151	3.30
Share the Road Signage - Along Bradys Run Road within Bradys Run Park	34.64% 53	15.03% 23	15.69% 24	20.92% 32	7.84% 12	5.88% 9	153	4.30
Share the Road Signage - Along Bradys Ridge Road from Dutch Ridge Road to Beacom Drive	5.26% 8	10.53% 16	14.47% 22	11.84% 18	35.53% 54	22.37% 34	152	2.71
Share the Road Signage - Along Mudlick Hollow Road from Sebring Road to Township Line	13.16% 20	13.16% 20	5.92% 9	9.21% 14	11.18% 17	47.37% 72	152	2.66

Q5: Check your two most desired end uses that you would like to see within the potential development area illustrated above:

Answered: 161 Skipped: 26



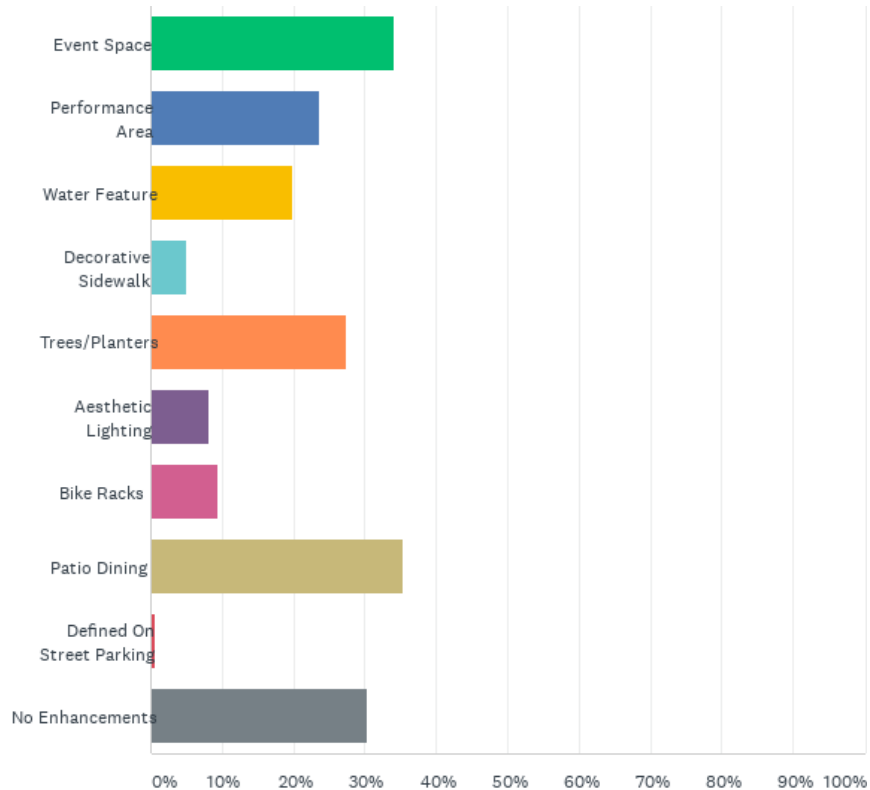
Q5: Check your two most desired end uses that you would like to see within the potential development area illustrated above:

Answered: 161 Skipped: 26

ANSWER CHOICES	RESPONSES	
Office/Professional	15.53%	25
Research & Development (Lab)	6.83%	11
Entertainment	26.71%	43
Restaurant	41.61%	67
Commercial Services (e.g. bank)	3.11%	5
Mixed Use Development	38.51%	62
Apartments	1.86%	3
Condo/Townhomes	6.83%	11
Senior Living	13.66%	22
No Development	40.37%	65
Total Respondents: 161		

Q7: Check your two most desired public space enhancements for the potential development area illustrated above:

Answered: 161 Skipped: 26



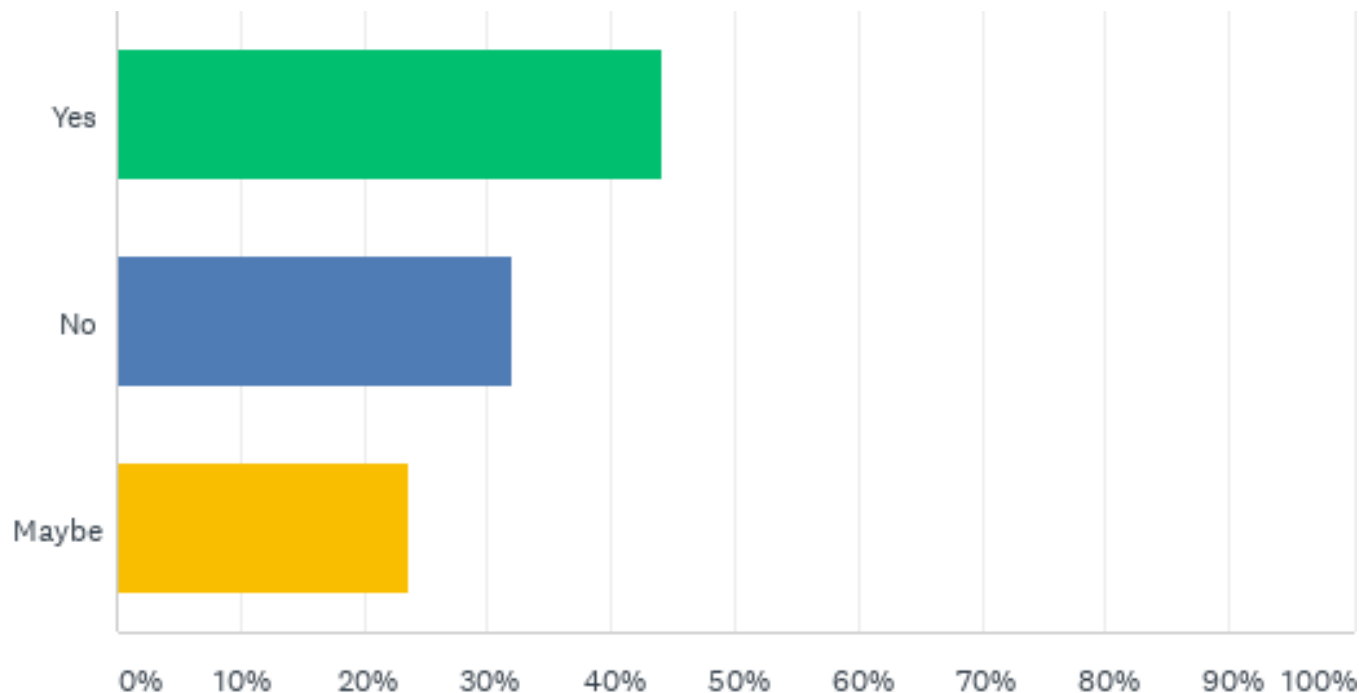
Q7: Check your two most desired public space enhancements for the potential development area illustrated above:

Answered: 161 Skipped: 26

ANSWER CHOICES	RESPONSES	
Event Space	34.16%	55
Performance Area	23.60%	38
Water Feature	19.88%	32
Decorative Sidewalk	4.97%	8
Trees/Planters	27.33%	44
Aesthetic Lighting	8.07%	13
Bike Racks	9.32%	15
Patio Dining	35.40%	57
Defined On Street Parking	0.62%	1
No Enhancements	30.43%	49
Total Respondents: 161		

Q8: Should the Township require annual inspections of Residential Rental Properties?

Answered: 156 Skipped: 31



Q8: Should the Township require annual inspections of Residential Rental Properties?

Answered: 156 Skipped: 31

ANSWER CHOICES	RESPONSES	
Yes	44.23%	69
No	32.05%	50
Maybe	23.72%	37
TOTAL		156